

Service Manual

AUTOMOTIVE ELECTRONICS

COMPACT
disc
DIGITAL AUDIO



<CQ-JH8061Z>

HONDA

CQ-JH8061Z

CQ-JH8062Z

AM/FM MPX ELECTRONIC TUNING
RADIO with CD Player

PART No. (CQ-JH8061Z) : 39100-S0X-C010

(CQ-JH8062Z) : 39100-S0X-A210

ID CORD : 1XX1

VEHICLE (CQ-JH8061Z) : ODYSSEY

(CQ-JH8062Z) : ODYSSEY (w/NAVI)

DESTINATION : North America

PRODUCED AFTER : Aug., 2000

Specification*

General

Power Supply	DC 12V (11V - 16V), Test Voltage 13.2V Negative Ground
Current Consumption	Less than 3.0A (at 0.5W)
Speaker Output	20W×4ch
Speaker Impedance	4Ω

AM Radio

Frequency Range	530 - 1,710kHz
Usable Sensitivity	24dB/μV (S/N 20dB)

FM Stereo Radio

Frequency Range	87.7 - 107.9MHz
Usable Sensitivity	7dB/μV (S/N 30dB)

CD Player

Signal to Noise Ratio	More than 66dB (IHF-A)
Channel Separation	More than 50dB (IHF-A)
Dimensions** (W×H×D)	180×172×52mm
Weight**	1.6kg

* Specifications and the design are subject to possible modification without notice due to improvements.

** Dimensions and Weight shown are approximate.

CONTENTS

	Page		Page
1 FEATUERS	2	9 PACKAGE AND IC BLOCK DIAGRAM	9
2 LASER PRODUCTS	2	10 REPLACEMENT PARTS LIST	13
3 REAR VIEW AND CONNECTORS	3	11 EXPLODED VIEW (Unit)	18
4 FRONT VIEW AND FUNCTIONS	3	12 CD Player Parts	19
5 WIRING CONNECTIONS	4	13 EXPLODED VIEW (CD Deck)	21
6 BLOCK DIAGRAM (Main Block)	5	14 WIRING DIAGRAM	22
7 BLOCK DIAGRAM (CD Servo Block)	6	15 SCHEMATIC DIAGRAM -1	26
8 TERMINALS DESCRIPTION	7	16 SCHEMATIC DIAGRAM -2	27

1 FEATUERS

- PLL (Phase Locked Loop) synthesized tuning.
- 18-station preset (12-FM, 6-AM).
- CD random, repeat play frction.
- Electronic control of power and sound.
- CD changer control.
- Anti-Theft system.

2 LASER PRODUCTS

Do not take apart this unit or attempt to make any changes yourself.

This unit is very intricate that uses a laser pickup to retrieve information from the surface of compact discs. The laser is carefully shielded so that its rays remain inside the cabinet. Therefore, never try to disassemble the player or alter any of its parts since you may be exposed to laser rays and dangerous voltages.

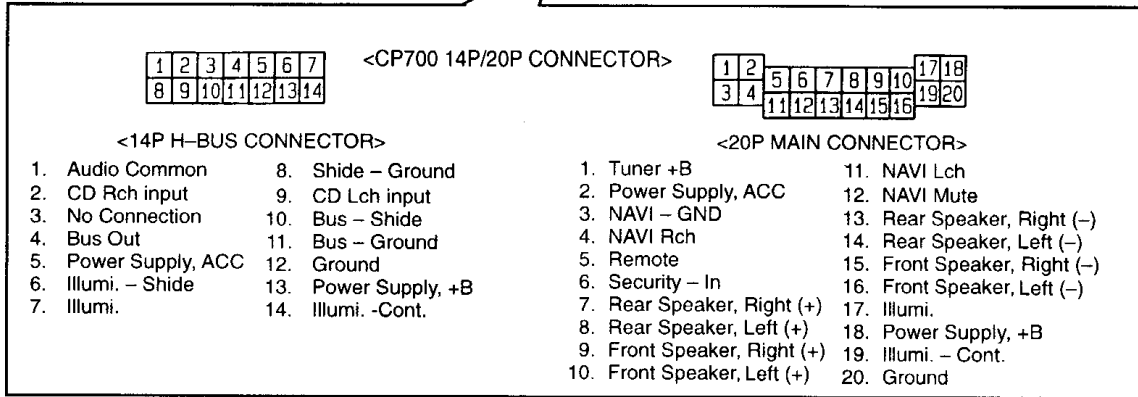
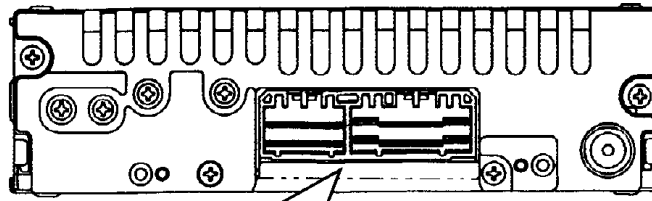
Laser products :

Wave length	780nm
Laser power	No hazardous radiation is emitted with safety protection.

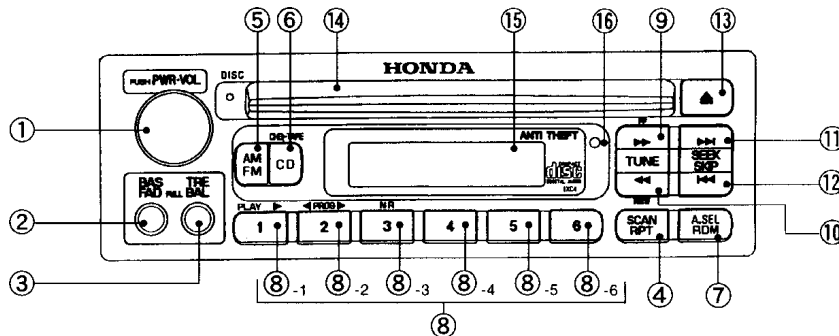
Caution

This product utilizes a laser. Use of controls or adjustments or performance of procedures other than those specified herein may result in hazardous radiation exposure.

3 REAR VIEW AND CONNECTORS

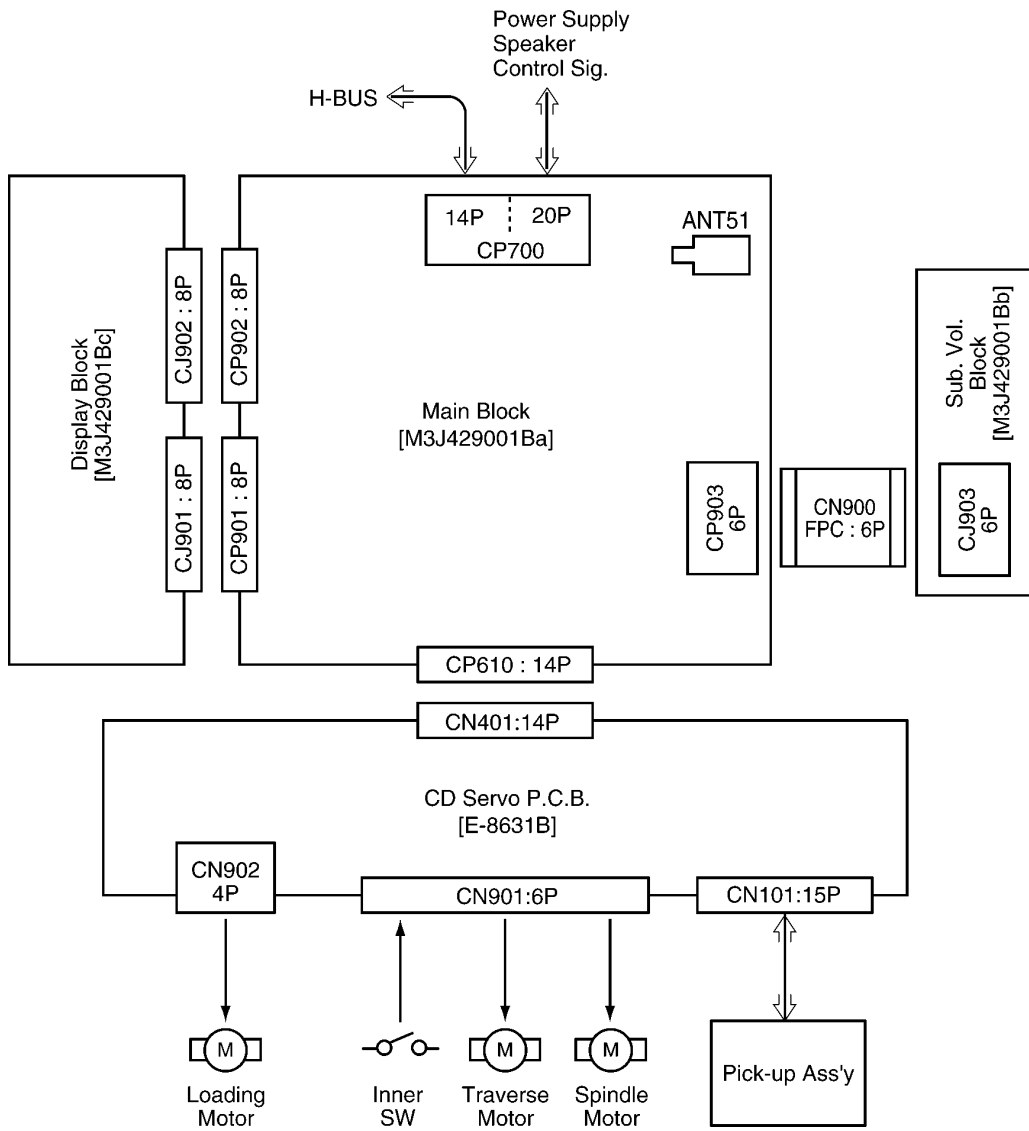


4 FRONT VIEW AND FUNCTIONS

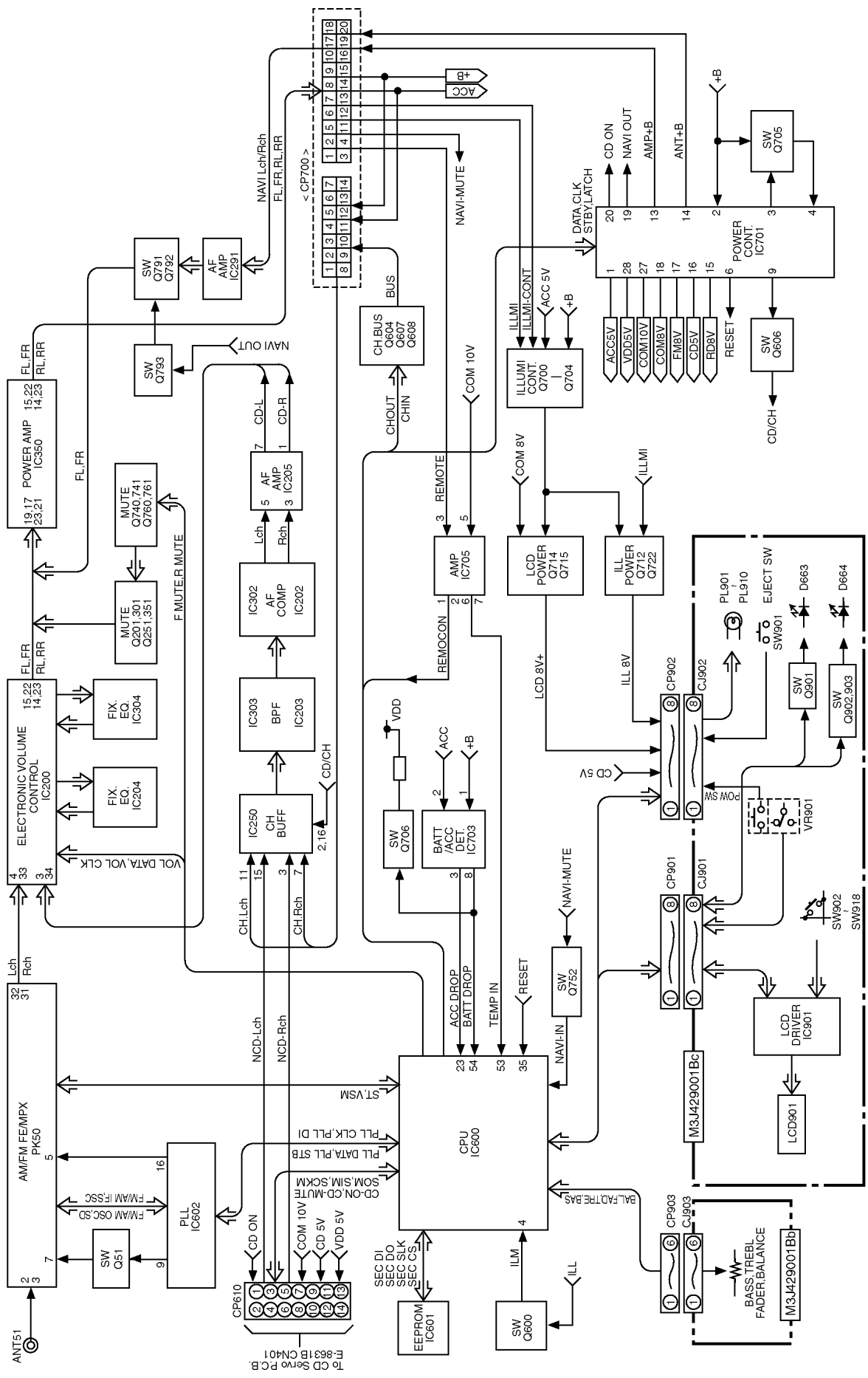


- | | | | | |
|----------------------|--|---|----|-----------------------|
| ① PWR SW | : Power ON/OFF. | ⑨ | ▶▶ | : Radio tuning up. |
| VOL | : Increase/Decrease of Volume. | | | : CD/CD.C /TAPE FF. |
| ② BAS/FAD | : Bass/Fader control. | ⑩ | ◀◀ | : Radio tuning down. |
| ③ TRE/BAL | : Treble/Balance control. | | | : CD/CD.C / TAPE REW. |
| ④ SCAN | : Radio seek up. | ⑪ | ▶▶ | : Radio seek up. |
| RPT | : CD repeat play. | | | : CD/CD.C track up. |
| ⑤ AM/FM | : Radio band selection. | ⑫ | ◀◀ | : Tape MS forward. |
| ⑥ CD | : CD mode selection. | | | : Radio seek down. |
| CHE-TAPE | : TAPE mode selection. | ⑬ | ▲ | : CD/CD.C track down. |
| ⑦ A. SEL | : Radio seek start. | | | : Tape MS backward. |
| RDM | : CD random play. | ⑭ | | : CD eject. |
| ⑧ 1 ~ 6 | : Preset radio frequency or calls preset frequency/CD.C disc change. | ⑮ | | |
| ⑧ ₋₁ PLAY | : Tape play. | ⑯ | | |
| ⑧ ₋₂ PROG | : Tape program change. | ⑰ | | |
| ⑧ ₋₃ NR | : Dolby NR selection. | | | |

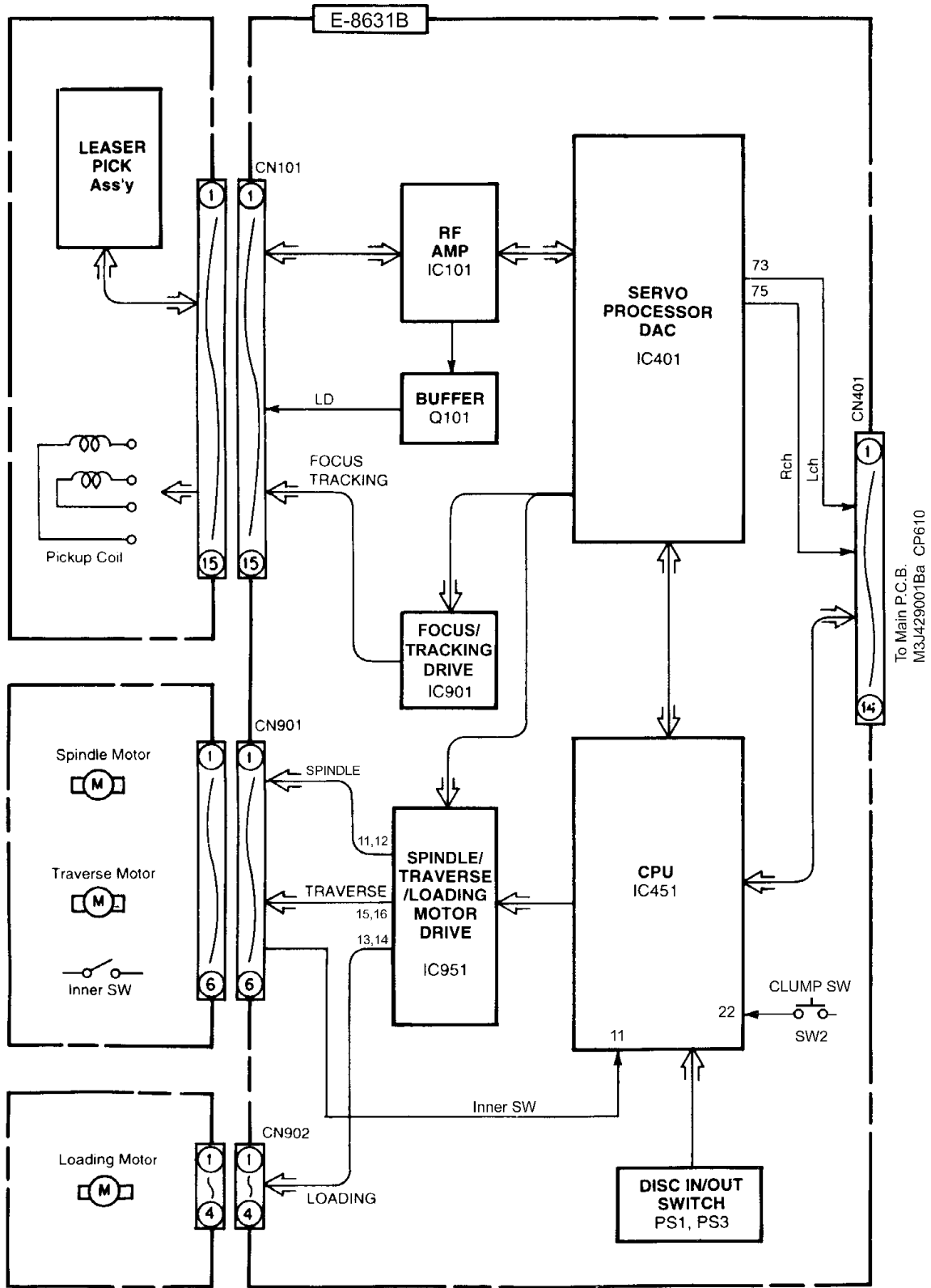
5 WIRING CONNECTIONS



6 BLOCK DIAGRAM (Main Block)

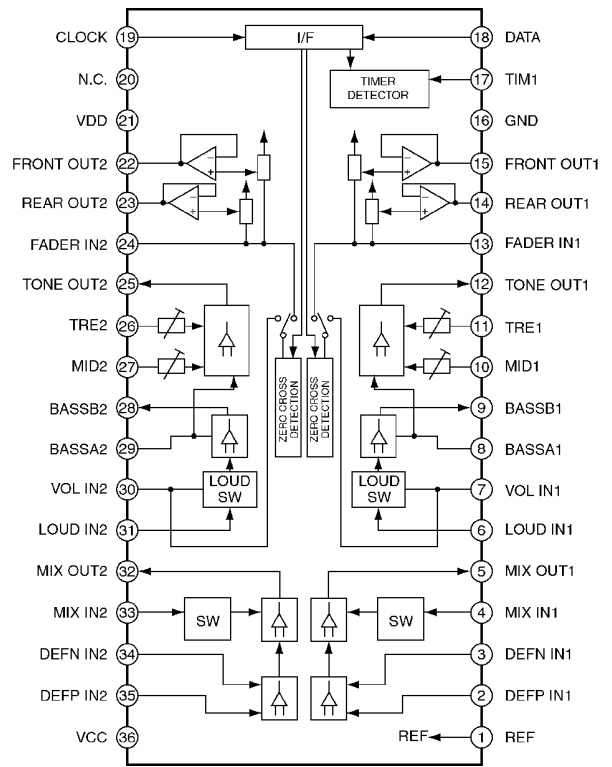
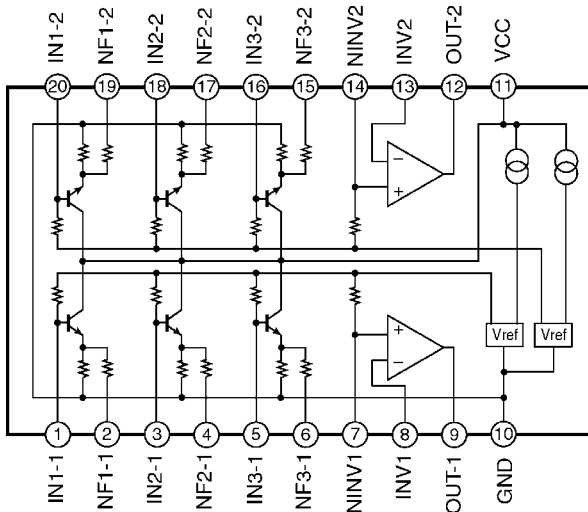
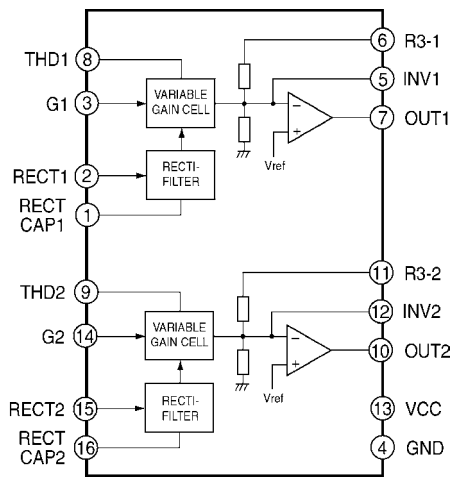
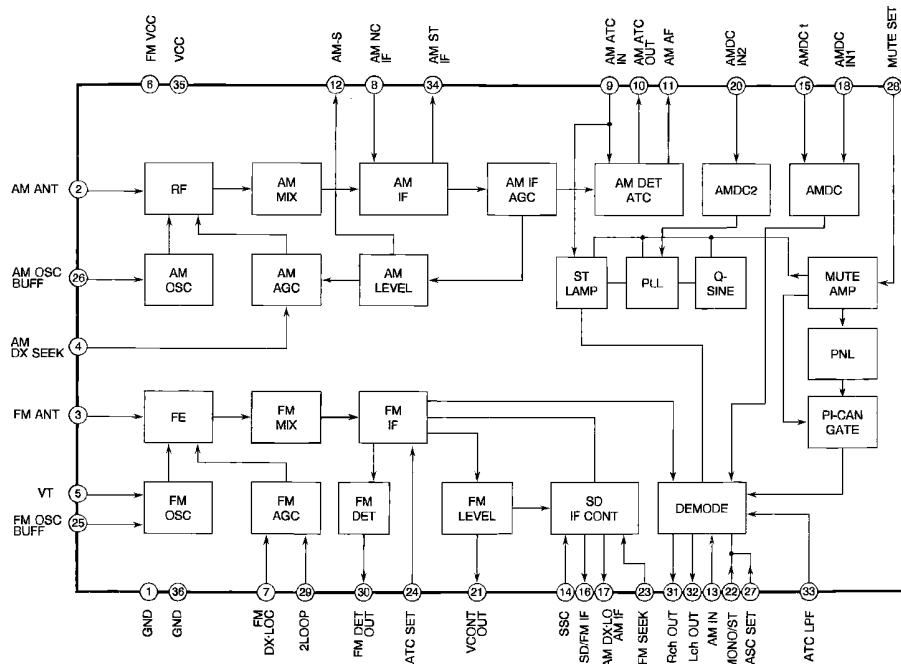


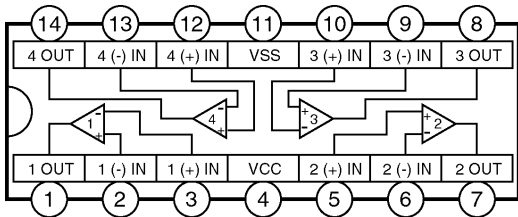
7 BLOCK DIAGRAM (CD Servo Block)



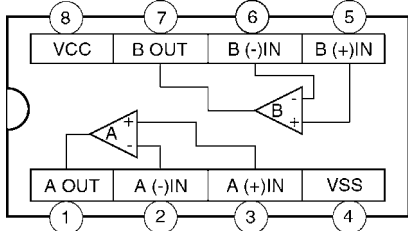
9 PACKAGE AND IC BLOCK DIAGRAM

9.1. Main Block

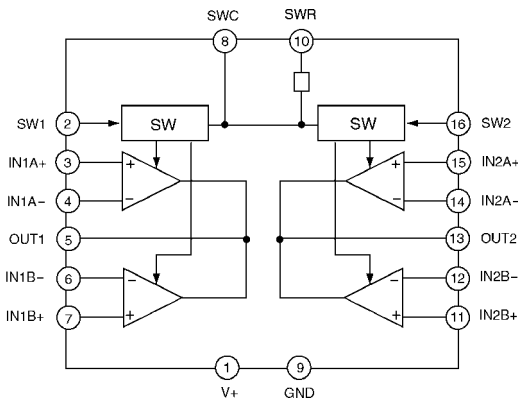




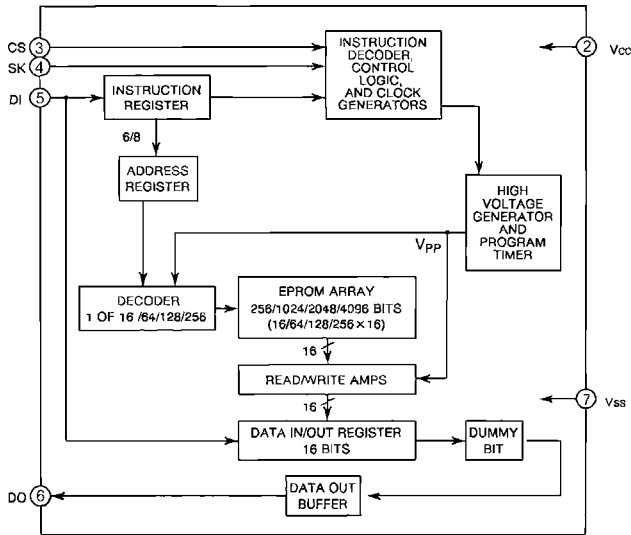
IC203,303 : C0ABCB000015



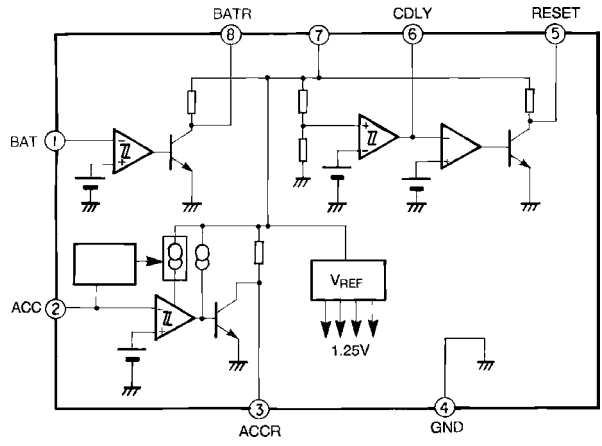
IC205,291,705 : C0ABBB000073



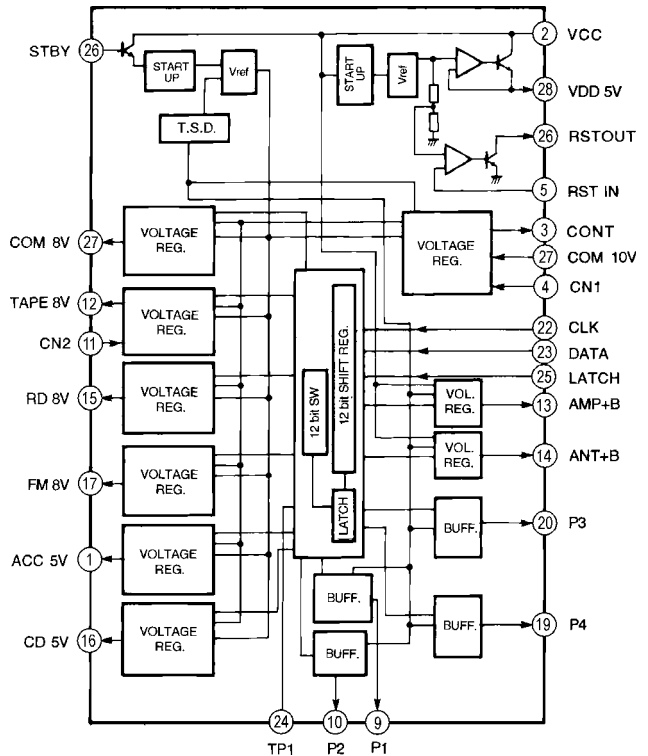
IC250 : C0ABBA000053



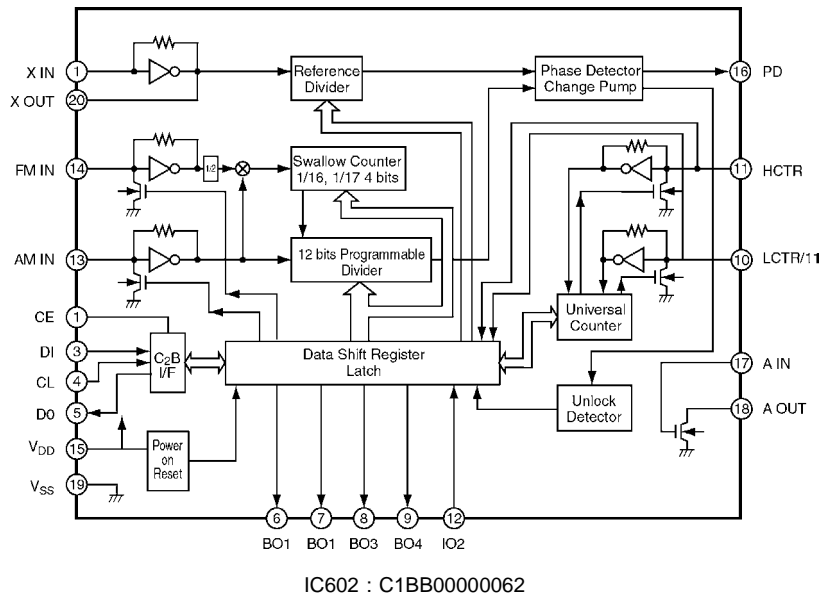
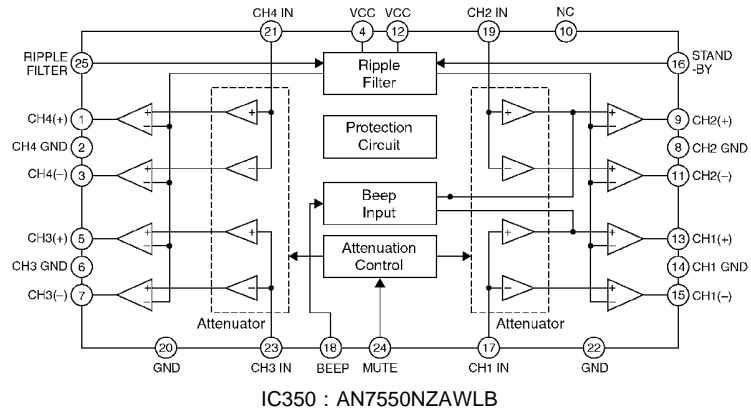
IC601 : C3EBCG000037



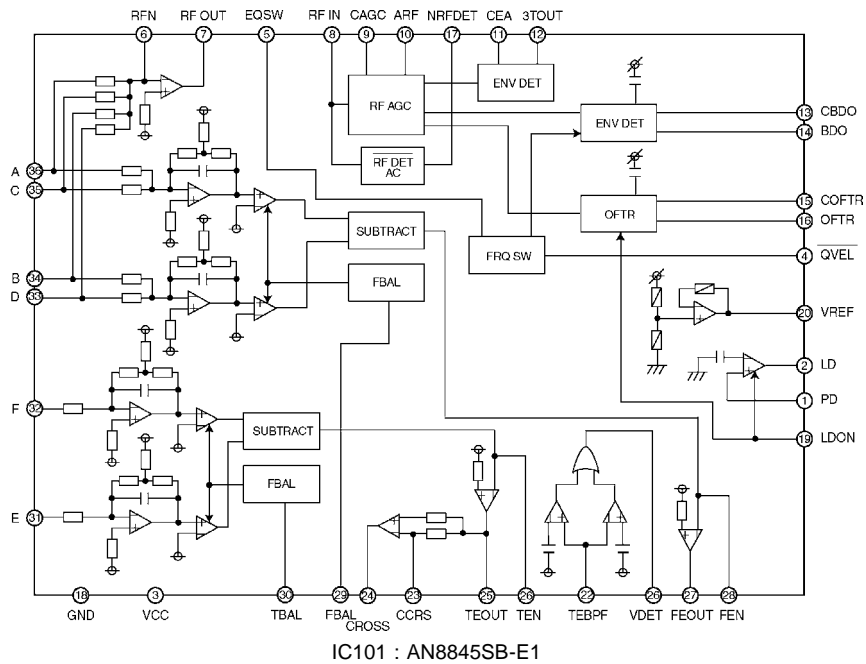
IC703 : AN8065SE1

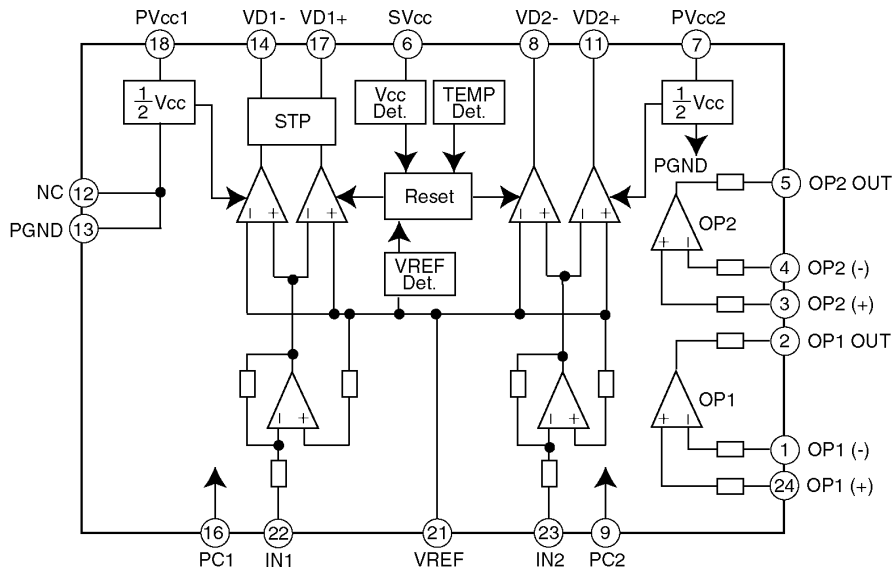


IC701 : C0DBZH000005

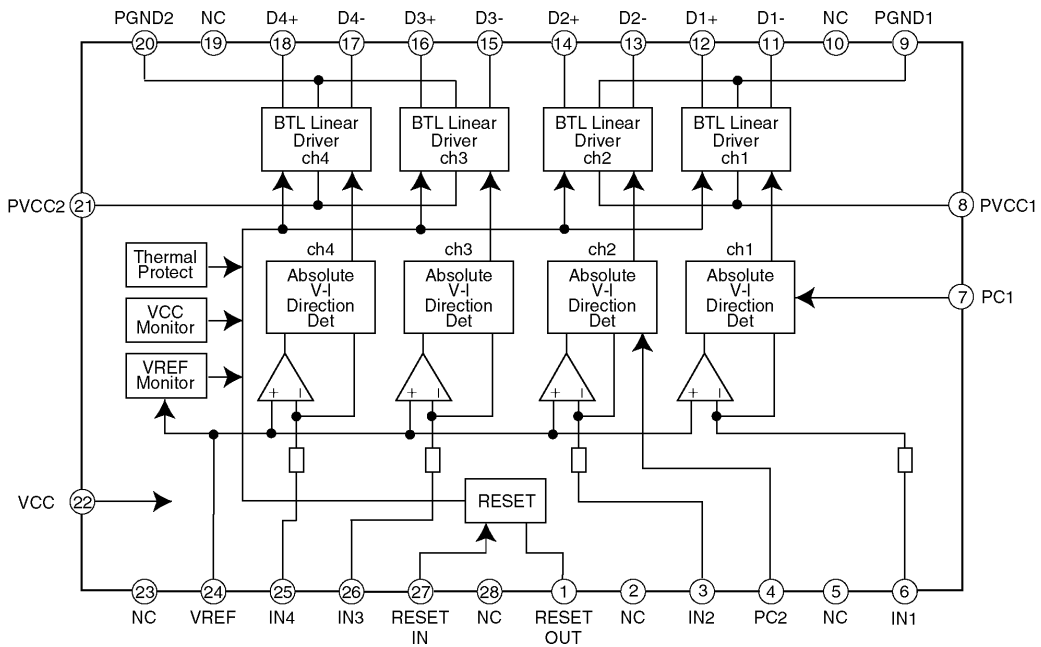


9.2. CD Servo Block



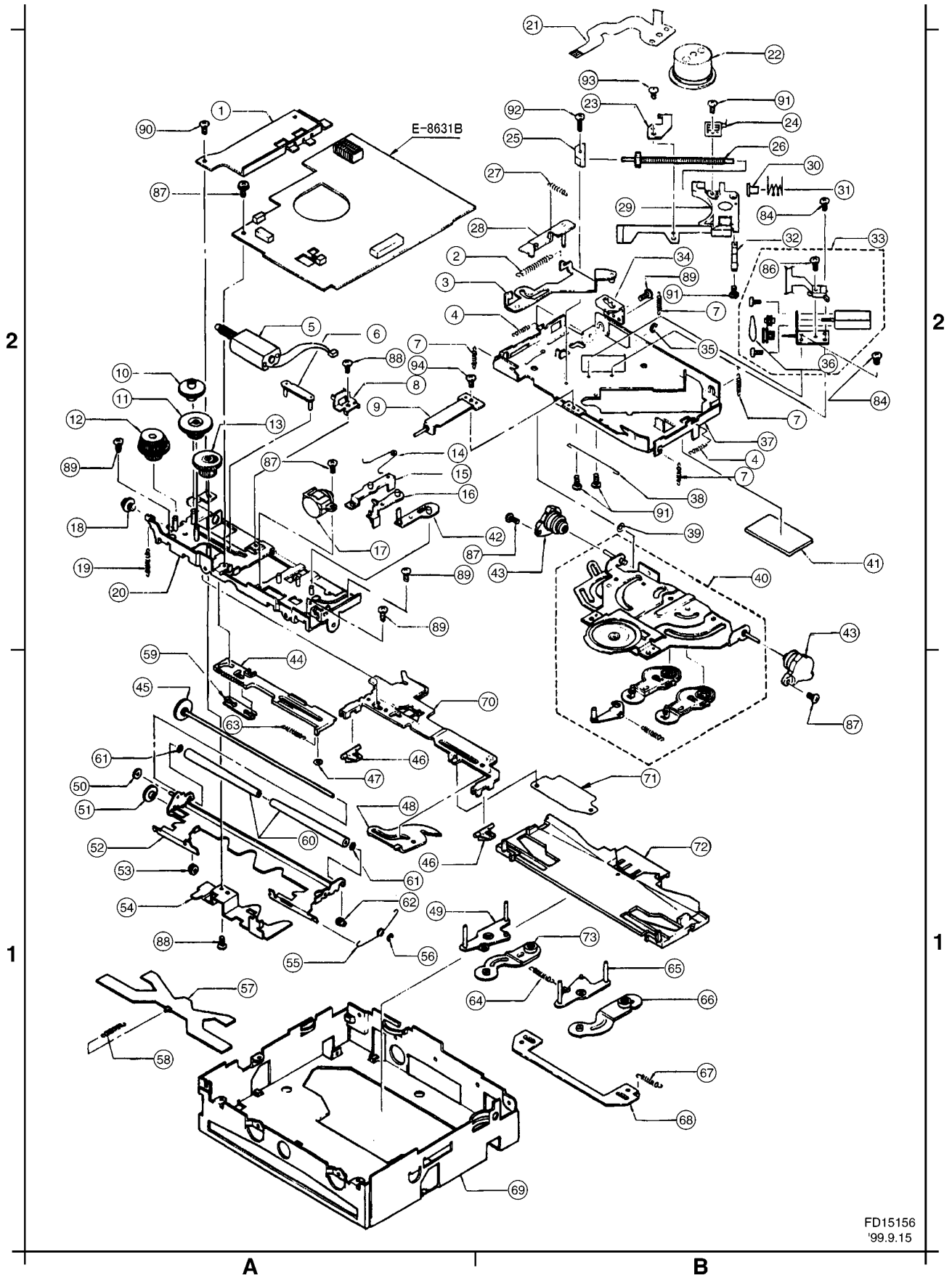


IC901 : AN8735NSB-E1



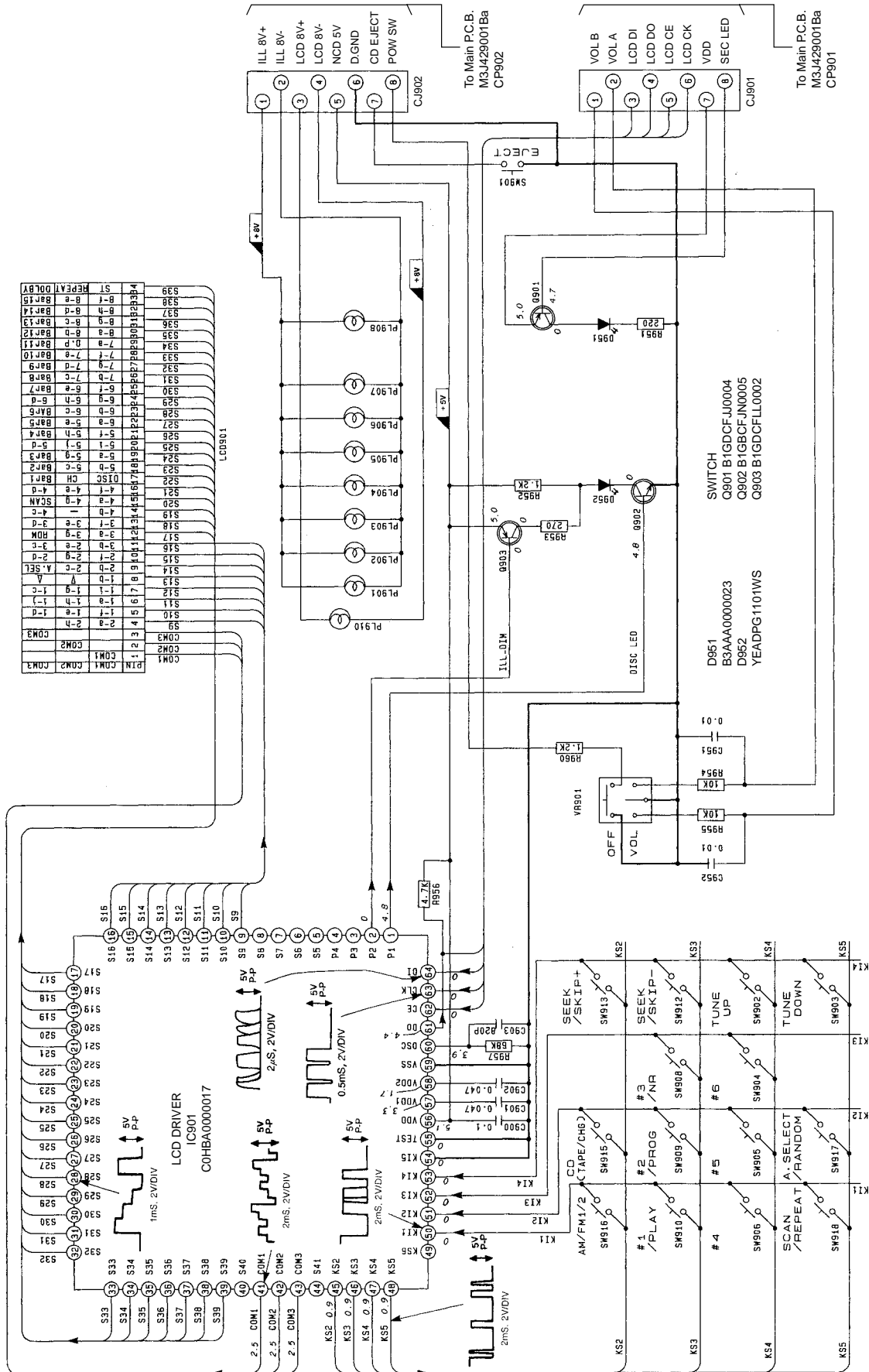
IC951 : AN8780SB-E1

13 EXPLODED VIEW (CD Deck)



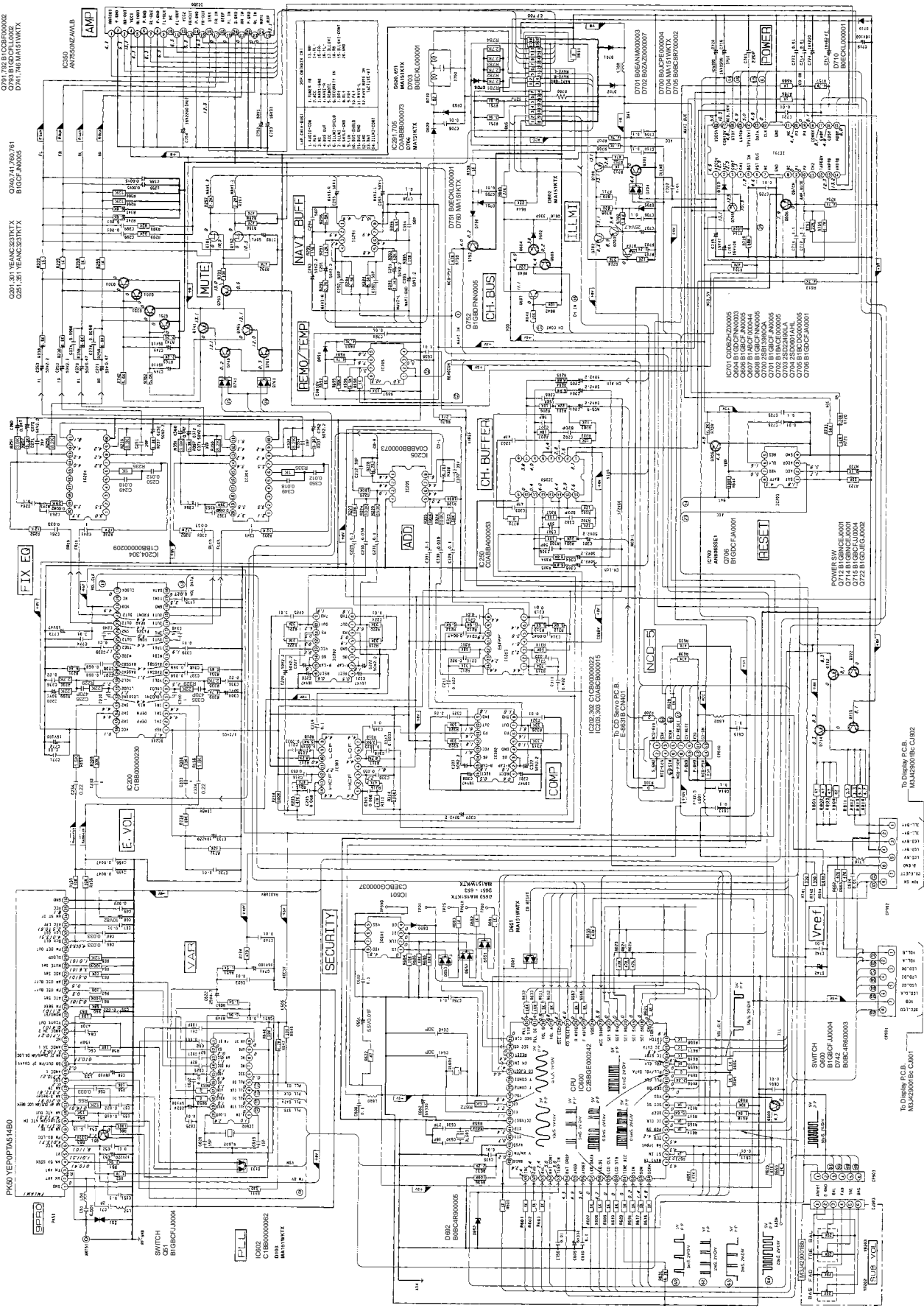
15 SCHEMATIC DIAGRAM -1

15.1. Display Block

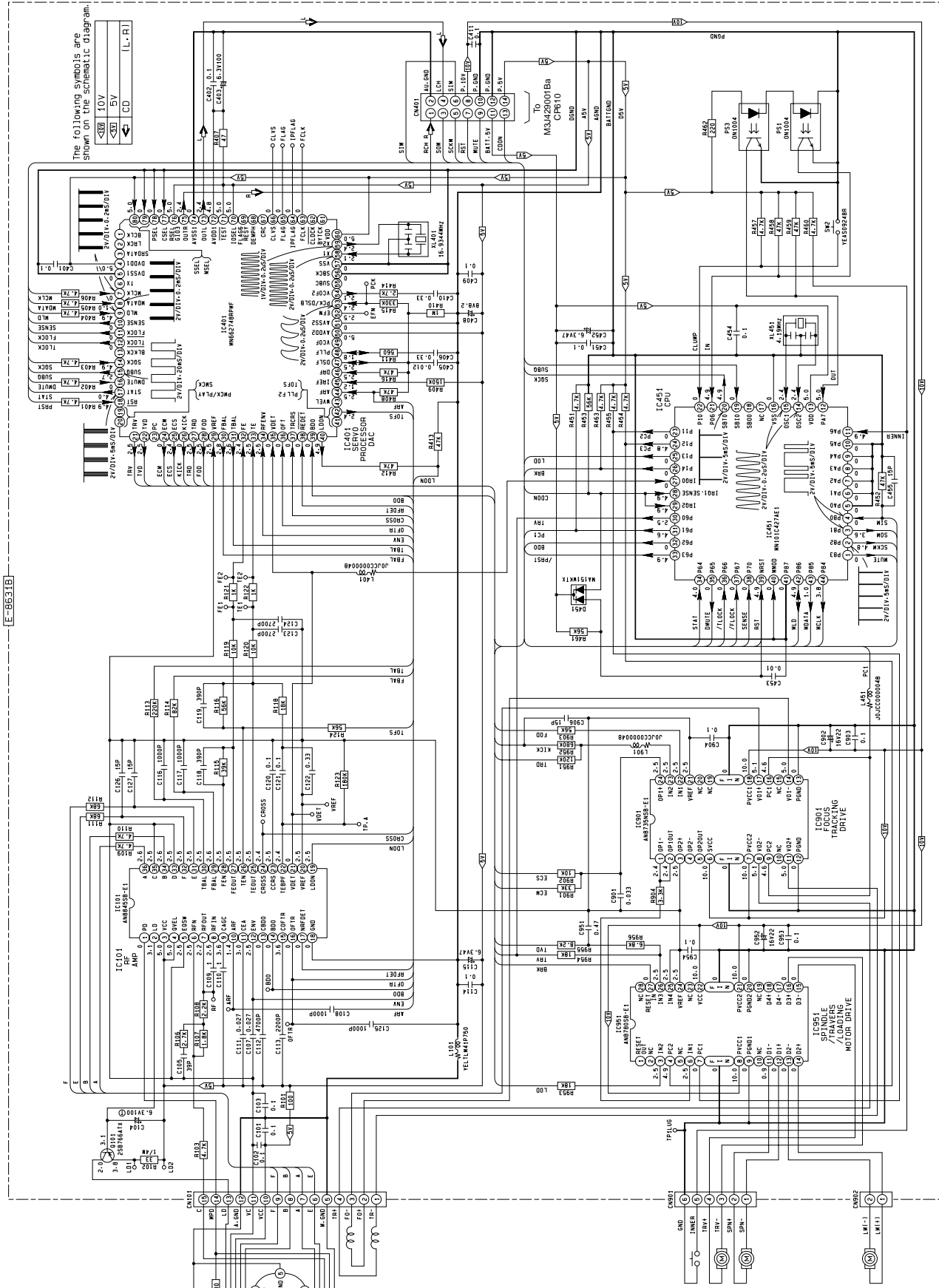


16 SCHEMATIC DIAGRAM -2

16.1. Main Block



16.2. CD Servo Block



The following symbols are shown on the schematic diagram.

<S>	10V
<D>	5V
CD	[L-R]

E-8631B